



Figure 1 - Initial Setup



Figure 2 - First Toluene Addition

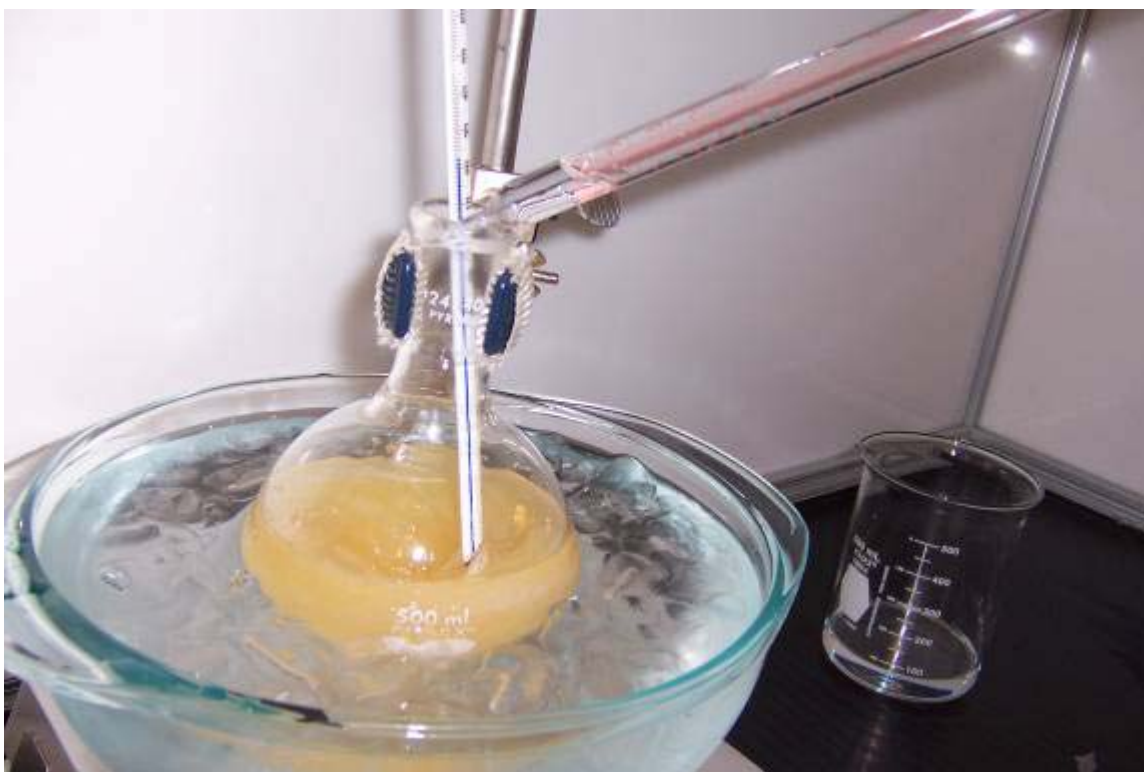


Figure 3 – 5th Toluene Addition



Figure 4 - 3 Min after 5th Toluene Addition

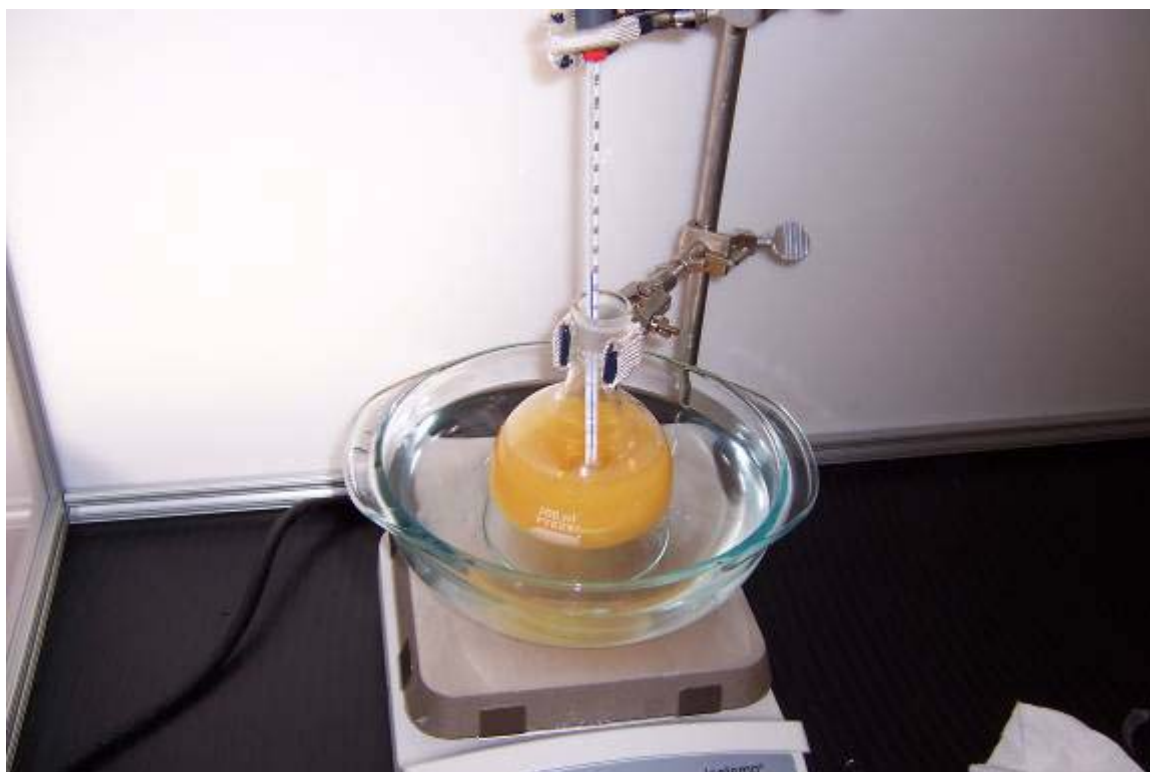


Figure 5 - Last Toluene Addition

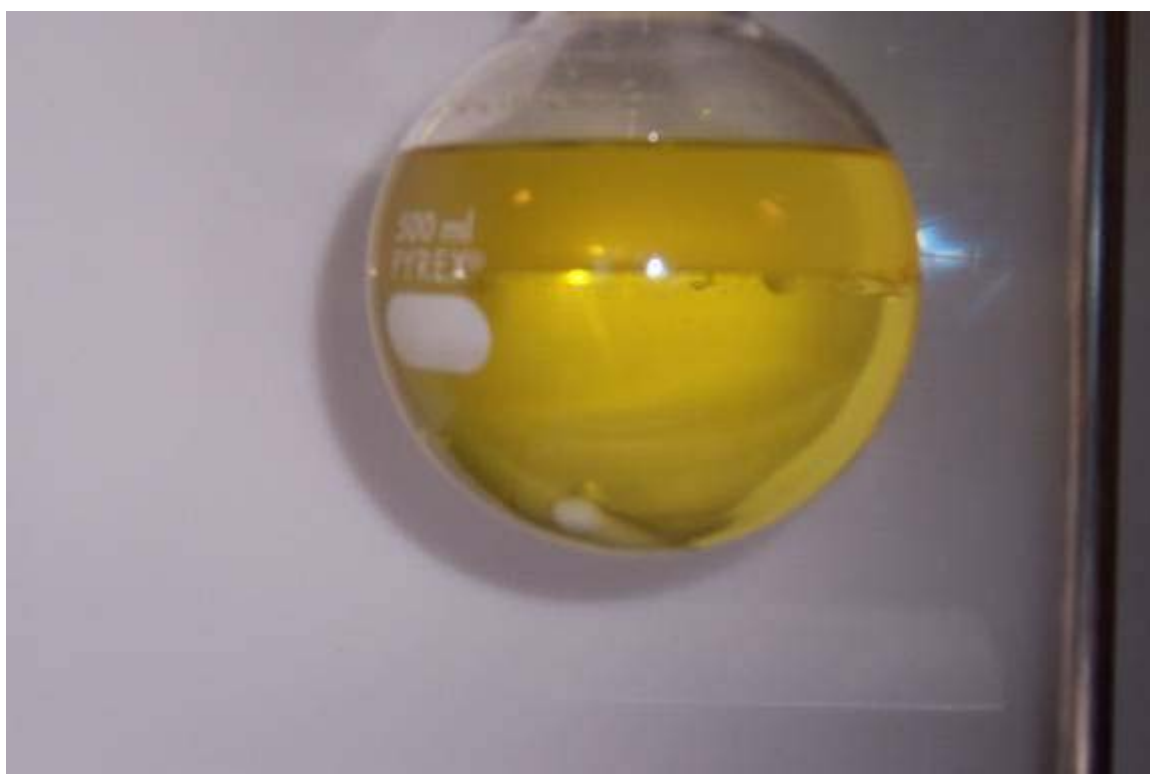


Figure 6 - Final Product



Figure 7 - First Wash (NaOH)



Figure 8 - Final Wash